



Fashion Research: May 22nd, 2018 for Spring 2018

Recommendations:

Major Trend: Lavender Spring

The Fall/Winter 2018 trends have softened and become more optimistic.

To Pursue:

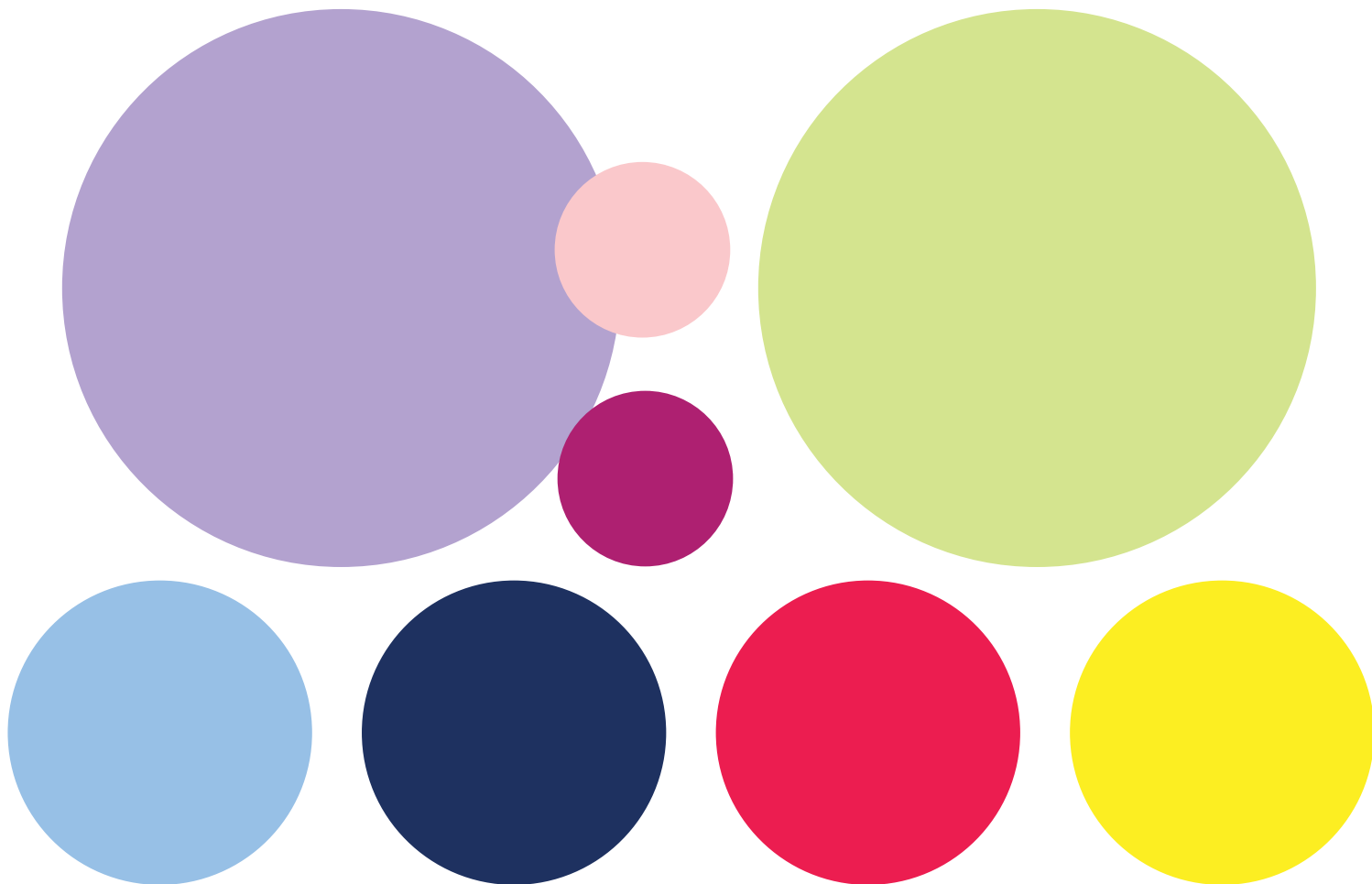
- Using Lavender as an accent color
- Plaids, esp. mixing plaids with contrasting patterns
- Complex and/or historical floral patterns
- "Revealed" bright florals peaking through black background

Main Colors:

- Lavender/Lt. Pink/ Fuchsia
- Spring/Celery/Sage
- Lt. Blue and Navy
- Red
- Lemon



COLOR TRENDS: Lavender Spring



Lavender accent as much as possible. Sometimes this can also be Fuchsia or Lt. Pink

Other colors:
Lime/Celery, Lt. Blue, Navy, Red,
Lemon

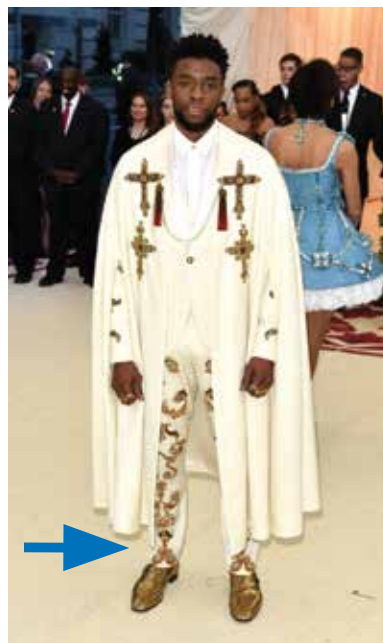
Flowers Update

Spring Botanicals



These flowers continue to be dark grounded with a historical feel.

Hidden Florals
continue to trend



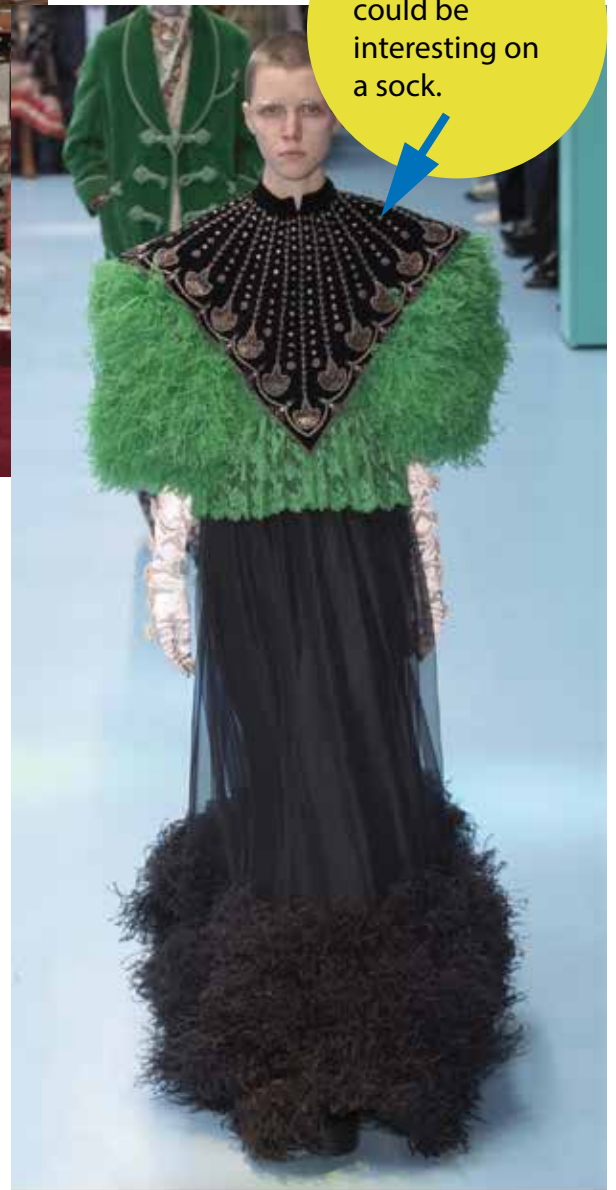
Art Deco Victorian

An interesting blend of these two eras on a dark background



- Complex Textures
- Competing patterns
- Organic Elements
- Repeating
- Understated colors, pops of bright colors

These patterns could be interesting on a sock.



Basket Patterns

Geometric, high contrast repeating patterns
Similar to the "Homestead" winter/fall patterns

PEACE BASKET



Color Trend: Greens

What grows out of the spruces and the spring/understated greens from the Fall/Winter

5.17.2018

FV TREND + COLOR | BELLE MARE TROPICS . SS 2019



BELLE MARE TROPICS



Offset by
Browns and Whites



FVDES

Offset by
Lavendar
and Yellow

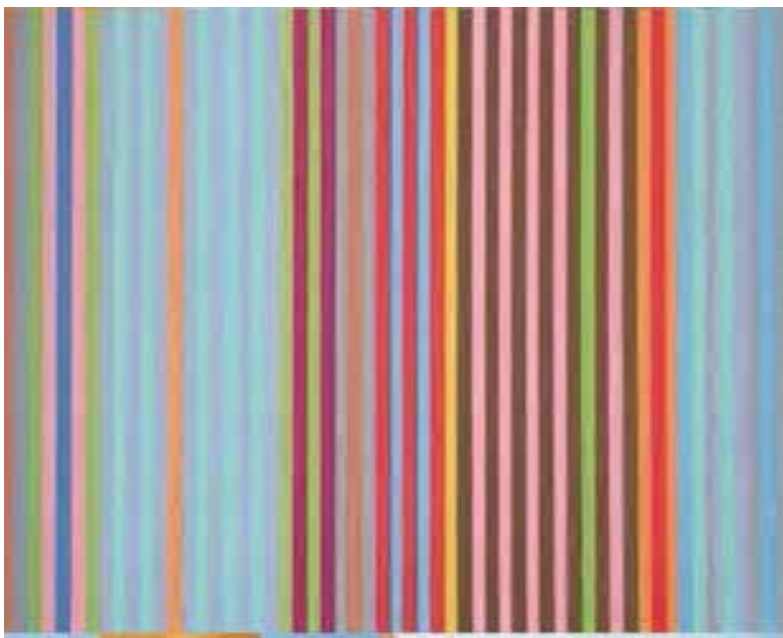
FIELDS OF GOLD / 2019

SEE MORE: #PINTEREST TREND MOODBOARDS #MARIEKE DE RUITER #WWW.TRENDSENSES.COM

Sources: Nicolás Coulomb - La Peñca - Descente - India Mahdavi - Benjamin Vink - Sleek Magazine - Natasa Vojinovic - POP Magazine - Charlotte Wales - Mark Good - Zebra Crossing Picture Factory

Color Trend: Lavender Accents

Nostalgic, unexpectedly soft, and offset to complex patterns



Color Trend: Lavender Accents

Especially works against dark lines (navy, black) and with pastel bodies (white, green)



Large Historical Flowers

Snakeskin

Complex Florals



Plaids

Overwhelming and Seemingly Mismatching Plaid Combinations Continue



Large Text

Can be seen as a textural element to draw the high, especially as a high contrast element



Feathers

Although the actual feathers won't translate to a sock, but incorporating feather imagery could be a fun new direction.



Feathers

Feathers played a big role at the 2018 Met Gala



Other Patterns

Patterns that aren't a major trend but which could be useful for sock design.



Geometric



Lace

Other Patterns

Patterns that aren't a major trend but which could be useful for sock design.



City Scape

Polka Dots

Other Patterns

Patterns that aren't a major trend but which could be useful for sock design.

FV TREND + COLOR | JUNGLE BLUE . SS 2019



JUNGLE BLUE 

